

# DEPARTMENT J20 | EDUCATIONAL LIVESTOCK DISPLAY

## ENTRY INFORMATION

DEADLINES	See Page 10 – ENTRY INFORMATION & IMPORTANT DATES
ENTRY LIMIT	One entry per class per exhibitor
ENTRY FEE	None

*Arrival/ Departure & Show Times: See Schedule on page 9.*

### RULES

- 1 Entries must be made on a separate entry form. Use Non-Livestock Form and write “Educational Livestock Display,” division and class number on form.
- 2 Each display to be arranged by exhibitor.
- 3 Display to be hung above exhibit or attached to stall area for all breeds except rabbits and cavies. Rabbit and cavy displays to be delivered to the Fur and Feathers Building upon arrival of animals.
- 4 Size of display: minimum of 3’x4’, maximum 4’x6’. The display should be educational.
- 5 Lettering shall be legible from 10 feet, and on one side only.
- 6 No display may be used for more than one year. Exhibits must display the exhibit tag provided by the Fair in order to be judged.
- 7 Fair management will designate an area for display if exhibitor does not have an animal stalled for the duration of the fair.
- 8 Posters to be dropped off in the Livestock Office Monday or Tuesday

### Section 177 | Educational Livestock Display

(9-11 years)

### Section 178 | Educational Livestock Display

(12-13 years)

### Section 179 | Educational Livestock Display

(14-15 years)

### Section 180 | Educational Livestock Display

(16 years & older)

### CLASS:

- 1 Beef Cattle
- 2 Dairy Cattle
- 3 Dairy Goats
- 4 Poultry
- 5 Pygmy Goats

- 6 Rabbits
- 7 Cavies
- 8 Sheep
- 9 Swine
- 10 Meat Goats
- 11 Dogs

### Section 181 | Best of Show Educational Livestock Display Awards (Do Not Enter)

### CLASS:

- 1 Overall Best of Show - \$50

## DEPARTMENT J22 | AG IN THE CLASSROOM

Designed for class projects created by students in TK- 6<sup>th</sup> grade

### ENTRY INFORMATION

DEADLINES	See Page 10 – ENTRY INFORMATION & IMPORTANT DATES
ENTRY LIMIT	None
ENTRY FEE	None

*Arrival/ Departure & Show Times: See Schedule on page 9.*

California Foundation for Agriculture in the Classroom is a wonderful resource for agriculture materials aligned to state standards. From lesson plans and Agriculture fact and activity sheets to newsletters and the “What’s Growin’ On?” student newspaper, resources provided by this organization are great tools in preparing projects for the Sonoma-Marín Fair, as well as gaining a better understanding of agriculture in our community and state.

#### **RULES:**

- 1 Only projects made in school under the supervision of a teacher may be entered. The teacher MUST sign entry form and the name of the school must be listed.
- 2 Limit of one “class project” per classroom.
- 3 An article may not be entered in more than one class and an exhibitor may not enter more than one article from the same pattern.

### Agriculture Class Projects

Section 192 | Grades T-K to Kindergarten

Section 193 | Grades 1<sup>st</sup> to 2<sup>nd</sup>

Section 194 | Grades 3<sup>rd</sup> to 4<sup>th</sup>

Section 195 | Grades 5<sup>th</sup> to 6<sup>th</sup>

#### **CLASS:**

- 1 School Gardens or Agriculture Projects
- 2 Any Other Agriculture Project (please specify)
- 3 Fair Theme

### Agriculture Individual Projects

Section 196 | Grades T-K to Kindergarten

Section 197 | Grades 1<sup>st</sup> to 2<sup>nd</sup>

Section 198 | Grades 3<sup>rd</sup> to 4<sup>th</sup>

Section 199 | Grades 5<sup>th</sup> to 6<sup>th</sup>

#### **CLASS:**

- 1 Any Agriculture Project (please specify)

### **SECTION 200 | Ag in The Classroom Awards (Do Not Enter)**

#### **CLASS:**

- 1 Best of Show in Each Grade Level Section (192-195) | \$15.00 & Rosette
- 2 Best of Show in Each Grade Level Section (196 –199) | \$10.00 & Rosette

## DEPARTMENT J22 | AGRICULTURE SCIENCES

### Designed for projects created by students in high school grades

ENTRY INFORMATION	
<b>DEADLINES</b>	<i>See Page 10</i> - ENTRY INFORMATION & IMPORTANT DATES
<b>ENTRY LIMIT</b>	None
<b>ENTRY FEE</b>	None

*Arrival/ Departure & Show Times: See Schedule on page 9.*

#### **RULES:**

- 1 Potted plants must be in suitable containers for display.
- 2 Exhibits must be correctly labeled.
- 3 Props (accessories) may be used in each class.
- 4 Real centerpieces may include fresh or dried flowers, fruits, vegetables, and/or other plant material.
- 5 Artificial centerpieces may be silk, tissue, plastic, etc., and may include some dried or treated natural material.

### **SECTION 201 | Plant Science/ Floriculture**

*Note: Suggested entries to include posters, project reports, maps, cell model, diagrams, dioramas, earth models.*

#### **CLASS:**

- 1 Potted Plants
- 2 Mini Gardens (Under 8" in diameter)
- 3 Mini Gardens (Over 8" in diameter)
- 4 Terrariums
- 5 Fresh Floral Arrangements
- 6 Silk, Dried, or Artificial Arrangement
- 7 Real Centerpiece
- 8 Artificial Centerpiece
- 9 Any Other, please describe

### **SECTION 202 | Agricultural Biology**

*Note: Suggested entries to include posters, project reports, maps, cell model, diagrams, dioramas, earth models.*

#### **CLASS:**

- 1 Cell models
- 2 Any other, please describe

### **SECTION 203 | Agricultural Science Awards (Do Not Enter)**

#### **CLASS:**

- 1 Best of Show Agri Plant Science | \$25 & Rosette
- 2 Best of Show Agri Floriculture | \$25 & Rosette
- 3 Best of Show Agri Biology | \$25 & Rosette

## DEPARTMENT J22 | AGRICULTURAL MECHANICS

### ENTRY INFORMATION

DEADLINES	See Page 10 –ENTRY INFORMATION & IMPORTANT DATES
ENTRY LIMIT	Two (2) entries per class, per exhibitor
ENTRY FEE	None

*Arrival/ Departure & Show Times: See Schedule on page 9.*

### RULES

- 1 Only projects made in school under the supervision of an Industrial Education/Agricultural Teacher may be entered. The teacher must sign entry form and the name of the school must be listed.
- 2 Students entering exhibits in Agricultural Mechanics must be regularly enrolled in a high school that is following the California State plan for vocational agriculture.
- 3 Although the exhibits need not be owned by the exhibitor, all must be the products of students as a regular part of their instruction in Agriculture Mechanics for the past year. The student exhibitor must have been at least the major contributor to the building or repairing of the exhibit.
- 4 No entry may be shown for more than one calendar year.
- 5 An article may not be entered in more than one class and an exhibitor may not enter more than one article from the same pattern.
- 6 **NOTE:** In classes for "Any Item" item must be identified on entry form.
- 7 State Rule IV-7 will apply.

## WELDING

### RULES:

- 1 Each entry (weld coupon) must be on metal 5" long.
- 2 The weld must be a minimum of 4" long.
- 3 The start and stop on the weld must show.
- 4 The metal can be of any thickness.
- 5 The pipe or tubing is to be 2" long.
- 6 The weld can be done in any position.

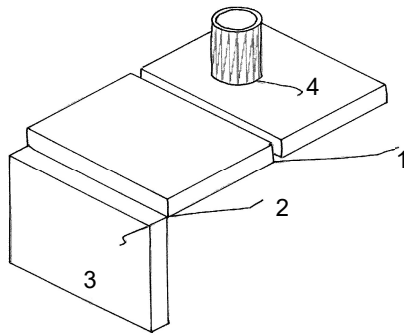
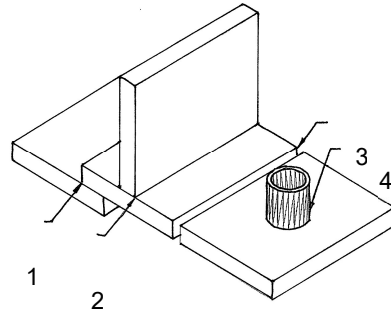
## SECTION 204 | Welding

### CLASS:

- 1 Oxyacetylene Welding Coupon – Steel Filler Rod
- 2 Oxyacetylene Welding Coupon – Bronze Filler Rod
- 3 Shielded Metal Arc Welding – (SMAW) Coupon
- 4 Gas Metal Arc Welding – (GMAW) Coupon
- 5 Gas Tungsten Arc Welding – (GTAW) Coupon Stainless Steel Base Metal
- 6 Gas Tungsten Arc Welding – (GTAW) Coupon Aluminum Base Metal
- 7 Any other Welds

**OXYACETYLENE WELDING (OAW)  
BRONZE & STEEL FILLER METAL**

- 1 Lap Joint
- 2 Tee Joint
- 3 Butt Joint (*weld 1 side only steel only*)
- 4 Pipe to flat & or Tubing to flat  
(*round, square rectangular material only*)

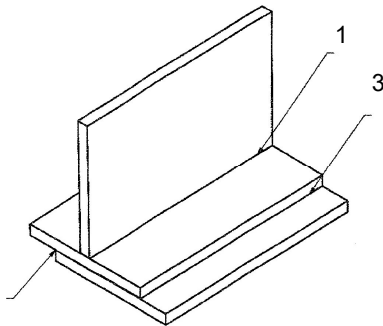


**SHIELDED METAL ARC WELDING (SMAW)**

*Use any of the following electrodes: AWS E6010, E6011, E6013, E7014, E7024, E7018*

- 1 Butt Joint (100% Penetration) weld 1 side only
- 2 Fillet Weld
- 3 Outside Corner Joint
- 4 Pipe or Tubing to flat

*Gas metal arc welding (GMAW) use solid hard wire only.  
Coupon same as SMAW*



**GAS TUNGSTEN ARC WELDING (GTAW)  
STAINLESS STEEL**

- 1 Lap Joint – Filler metal required
- 2 Lap Joint – No Filler Rod
- 3 Tee Joint – Filler metal required

**ALUMINUM METAL**

- 1 Lap Joint – Filler metal required
- 2 Lap Joint – No Filler Rod
- 3 Tee Joint – Filler metal required

## SECTION 205 | Electrical Wiring Skills

**Note:** Covers must not be placed on boxes in order to make judging easier. If you enter classes 1 through 4 you may mount all 4 on one display board.

### CLASS:

- 1 Single pole switch controls one-half of a duplex receptacle, the other half of the receptacle is "hot".
- 2 Loop Circuit with a hot duplex receptacle beyond the switch.
- 3 A 3-way Switch System.
- 4 A 4-way Switch System.
- 5 Other Electrical Wiring Skills

## SECTION 206 | Farm Equipment Constructed – Small Projects

**Note:** Under 12" – try squares, bookends, etc.

### CLASS:

- 1 Cold Metal
- 2 Sheet Metal
- 3 Woodwork
- 4 Other materials
- 5 Welding & Forging
- 6 Any Other, (please describe)

## SECTION 207 | Farm Equipment Constructed – Medium Projects

### CLASS:

- 1 Livestock Feeding & Handling Equip.
- 2 General Farm Equipment, metal - (BBQ etc.)
- 3 General Farm Equipment, wood – (benches, tables, etc.)
- 4 Any Other, please specify

## SECTION 209 | Agricultural Mechanics Awards (Do Not Enter)

**Note:** Sweepstakes will be calculated as follows: 1st place - 5 points; 2nd place - 3 points; 3rd place - 1 point (See State Rule IV-7).

### CLASS:

- 1 **Sweepstakes 1<sup>st</sup> Place** | \$50 & Rosette
- 2 **Best of Show Interm Electrical Wiring** | \$50 & Rosette
- 3 **Best of Show Adv. Electrical Wiring** | \$50 & Rosette
- 4 **Best of Show Oxyacetylene Welding** | \$25 & Rosette
- 5 **Best of Show Electric Arc Welding** | \$25 & Rosette
- 6 **Best of Show Farm Equipment** | \$25 & Rosette

# DEPARTMENT J22 | HIGH SCHOOL INDUSTRIAL EDUCATION

## ENTRY INFORMATION

DEADLINES	See Page 10 –ENTRY INFORMATION & IMPORTANT DATES
ENTRY LIMIT	Two entries, per class
ENTRY FEE	None

*Arrival/ Departure & Show Times: See Schedule on page 9.*

### RULES:

- 1 Only projects made in school under the supervision of an Industrial Arts or Vocational Trade and Technical teacher may be entered.
- 2 Projects made from assembly kits are not eligible, (except where noted). Component parts should be made by exhibitor whenever reasonably possible, and judges will rate accordingly.
- 3 Projects must have been started and completed during the preceding school year.
- 4 A project may be entered for one award only.
- 5 No exhibitor may enter more than one article made from the same pattern.

**Note:** The Industrial Education Department will be judged by the Danish System of Judging first then the Judge will go back through all the blue group winners by class and place them by the American System of Judging, 1<sup>st</sup>-3<sup>rd</sup>.

## DRAFTING

### SECTION 210 | Architectural Models, Wood, etc.

### SECTION 211 | Basic Mechanical Hand Drawing –

**Note:** Dimensioned orthographic or auxiliary views (single sheet only)

### SECTION 212 | Basic CAD Mechanical Drawing –

**Note:** Dimensioned orthographic or auxiliary views (single sheet only)

### SECTION 213 | Advanced Mechanical Hand Drawing –

**Note:** Dimensioned ortho with exploded or isometric views (multi sheet sets okay)

### SECTION 214 | Advanced CAD Mechanical Drawing –

**Note:** Dimensioned ortho with exploded or isometric views or 3D models (multi sheet sets okay)

### SECTION 215 | Illustrative Hand Mechanical Drawing –

**Note:** Single sheet entry in perspective or isometric view or 3D models with shading or color

### SECTION 216 | Illustrative CAD Mechanical Drawing –

**Note:** Single sheet entry in perspective or isometric view or 3D models with shading or color

### SECTION 217 | Basic Hand Architectural Drawing –

**Note:** Dimensioned floor plans or elevations (single sheet entry)

### SECTION 218 | Basic CAD Architectural Drawing –

**Note:** Dimensioned floor plans or elevations (single sheet entry)

### SECTION 219 | Advanced Hand Architectural Drawing –

**Note:** Multi-sheet sets containing dimensioned plans elevations, details, sections

### SECTION 220 | Advanced CAD Architectural Drawing –

**Note:** Multi-sheet sets containing dimensioned plans elevations, details, sections (can include 3D models)

## SECTION 221 | Illustrative Hand Architectural Drawing –

*Note: Single sheet entry in perspective or isometric view with shading or color*

## SECTION 222 | Illustrative CAD Architectural Drawing –

*Note: Single sheet entry in perspective or isometric view with shading or color (can include 3D models)*

## SECTION 223 | Adv. Illustrative CAD Architectural Drawing –

*Note: Single sheet entry in perspective or isometric view with shading or color (can include 3D models)*

### CLASS:

- 1 Grades 9 & 10
- 2 Grades 11 & 12

## RESEARCH PROJECTS

### RULES:

- 1 The object of the Research Project is to have students work with realistic problems dealing in Architecture and Engineering to develop problem solving skills.
- 2 All projects entered must be approved by the student's Voc-Ed teacher.
- 3 Exhibited projects and research papers shall be the result of the student(s) own efforts.
- 4 The official maximum size for the Research Projects is 48 inches wide by 30 inches deep (the distance from front to back) by 6 1/2 feet high.
- 5 Research papers are to be typed. The problem statement and solution statement must be included in the research papers.

## SECTION 224 | Research Projects

### CLASS:

- 1 Individual Projects
- 2 Group Projects

## METAL WORK

## SECTION 225 | Metal Work Grades 9 & 10

## SECTION 226 | Metal Work Grades 11 & 12

### CLASS:

- 1 Sheet Metal Basic
- 2 Sheet Metal Fabrication Advanced (Project made from 4 or more parts)
- 3 Art Metal (Free Form) One of a Kind
- 4 Foundry Basic (Single Items)
- 5 Foundry (3 or more parts which require machining and/or fabrication)
- 6 Machine work (individual parts or simple assemblies)
- 7 Machine work (Advanced or assemblies of 3 or more parts)
- 8 Advanced Metal Construction (Assemblies with machined parts, welded or fastener construction)
- 9 Welding Fabrication (Arc Projects assembled by arc welding only)
- 10 Welding Fabrication (Gas Projects assembled by gas welding only)
- 11 Bench Metal Construction (Projects formed by bending and assembling with rivets and/or bolts).
- 11 Basic Wrought Iron (Assemblies of small parts & scrolls welded or riveted) - decorative light duty items



- 12 Basic Wrought Iron (Assemblies of large parts & scrolls welded or riveted) - tables, chairs, racks, shelves, etc. 14 Any Metal Article (kit)

## WOODWORKING

### SECTION 227 | Woodworking Grades 9 & 10

### SECTION 228 | Woodworking Grades 11 & 12

#### CLASS:

- |   |  |
|---|--|
| <ol style="list-style-type: none"> <li>1 Coffee Table or End Tables</li> <li>2 Jewelry Box</li> <li>3 Cheese Board/Cutting Board</li> </ol> | <ol style="list-style-type: none"> <li>4 Woodturning</li> <li>5 Yard/Garden Furniture</li> <li>6 Other Small Items</li> <li>7 Other Large Items</li> </ol> |
|---|--|

### SECTION 229 | Industrial Education Awards (Do not enter)

#### CLASS:

- 1 Best of Show Drafting | \$25 & Rosette
- 2 Best of Show Metal Work | \$25 & Rosette
- 3 Best of Show Woodworking | \$25 & Rosette
- 4 Best of Show Research Projects | \$25 & Rosette

## DEPARTMENT J23 | YOUTH ELECTRICITY & WOODWORKING

ENTRY INFORMATION	
DEADLINES	<i>See Page 10 – ENTRY INFORMATION &amp; IMPORTANT DATES</i>
ENTRY LIMIT	2 entries per exhibitor, per class
ENTRY FEE	None

*Arrival/ Departure & Show Times: See Schedule on page 9.*

### SECTION 230 | Electricity

#### CLASS:

- 1 **Beginning Electricity**  
Simple Battery, Circuit Electric Quiz Board, Steady Hand Tester, Extension Cord, Etc.
- 2 **Advanced Electricity**  
Re-Wire A Lamp, Make A Board, Test Lamp, Continuity Tester, Demonstration Control Board

### SECTION 231 | Woodworking

#### CLASS:

- 1 **1<sup>st</sup> Year Woodworking**  
Utility stool, spice rack, drawer divider, toolbox, bolt and screw rack, etc.
- 2 **2<sup>nd</sup> Year Woodworking**  
Tool holder, hardware display, board of common wood fasteners, toolbox, miter box, tool rack, etc.
- 3 **3<sup>rd</sup> Year & Over Woodworking**  
Sawhorse, large show box, wall desk, doghouse, table, bench, etc.

**SECTION 232 | Electricity, Woodworking Awards** (Do Not Enter)

**CLASS:**

- 1 Best of Show Electricity | \$25 & Rosette
- 2 Best of Show Woodworking Exhibit | \$25 & Rosette
- 3 Youth Craftsman Award | \$100 & Rosette

Need help with your entries?  
Not sure what class your item should go in?  
New to entering the fair and have a few questions?  
We are happy to help  
707-283-3247  
Or  
Send an email to  
[EntryOffice@Sonoma-MarinFair.org](mailto:EntryOffice@Sonoma-MarinFair.org)

## DEPARTMENT J23 | YOUTH WELDING

### ENTRY INFORMATION

DEADLINES	<i>See Page 10 – ENTRY INFORMATION &amp; IMPORTANT DATES</i>
ENTRY LIMIT	2 entries per exhibitor, per class
ENTRY FEE	None

*Arrival/ Departure & Show Times: See Schedule on page 9.*

### SECTION 234 | 1st Year Welding – Oxyacetylene

#### CLASS: Small Projects

- 1 Lap Joint
- 2 Tee Joint
- 3 Butt Joint
- 4 Corner/edge
- 5 Any other (please describe)

### SECTION 235 | 2<sup>nd</sup> Year Welding – Arc or Oxyacetylene

#### CLASS: Medium Projects

- 1 Test Coupon
- 2 Horseshoes
- 3 Sheep Stanchion
- 4 Wagon/Bench
- 5 Any other (please describe)

### SECTION 236 | 3<sup>rd</sup> Year & Over Welding – Arc, Oxyacetylene or Mig

#### CLASS: Large Projects

- 1 Test Coupon
- 2 Horseshoes
- 3 Go-Cart
- 4 Any other (please describe)

### SECTION 237 | Welding Awards

#### CLASS:

- 1 Best of Show 1<sup>st</sup> Year
- 2 Best of Show 2<sup>nd</sup> Year
- 3 Best of Show 3<sup>rd</sup> Year and Over

## DEPARTMENT J23 | YOUTH SMALL ENGINES

### ENTRY INFORMATION

DEADLINES	See Page 10 –ENTRY INFORMATION & IMPORTANT DATES
ENTRY LIMIT	None
ENTRY FEE	None
NOTE	Engines MUST NOT CONTAIN ANY IGNITABLE FLUIDS

*Arrival/ Departure & Show Times: See Schedule on page 9.*

### SECTION 239 | Junior Small Engines

#### CLASS:

- 1 Small Engine
- 2 Any other (please specify)

### SECTION 240 | Junior Small Engines Awards (Do Not Enter)

#### CLASS:

- 1 Best of Show Small Engines | \$25 & Rosette

Need help with your entries?  
Not sure what class your item should go in?  
New to entering the fair and have a few questions?  
We are happy to help!  
707-283-3247  
Or  
Send an email to  
EntryOffice@Sonoma-MarinFair.org

## DEPARTMENT J23 | SCHOOL PROJECTS /EDUCATIONAL POSTERS

### ENTRY INFORMATION

DEADLINES	See Page 10 – ENTRY INFORMATION & IMPORTANT DATES
ENTRY LIMIT	None EXCEPT for Educational Poster – 3
ENTRY FEE	None

*Arrival/ Departure & Show Times: See Schedule on page 9.*

### SCHOOL GROUP PROJECTS

**SECTION 241 | Grades T-K through Kindergarten**

**SECTION 242 | Grades 1<sup>st</sup> through 2<sup>nd</sup>**

**SECTION 243 | Grades 3<sup>rd</sup> through 4<sup>th</sup>**

**SECTION 244 | Grades 5<sup>th</sup> through 6<sup>th</sup>**

**SECTION 245 | Grades 7<sup>th</sup> through 8<sup>th</sup>**

#### CLASS:

- 1 Illustrated Booklet, Photo Story
- 2 Mural (No larger than 4'x8')
- 3 Fair Theme
- 4 Any other (please specify)

**SECTION 246 | School Group Project Awards** (Do Not Enter)

#### CLASS:

- 1 Best of Show School Group Project | \$25 & Rosette
- 2 Best of Show Fair Theme Related Project | \$25 & Rosette

### SCHOOL INDIVIDUAL PROJECTS

**SECTION 247 | School Individual Projects**

#### CLASS:

- 1 Missions
- 2 Science Projects
- 3 Models
- 4 History/Social Studies Projects
- 5 Fair Theme
- 6 Any other (please specify)

## SECTION 248 | Educational Posters (Limit 3)

(SEE PAGE 96 FOR EDUCATIONAL LIVESTOCK DISPLAYS)

### **RULES:**

- 1 Develop a poster that SHARES your knowledge and TEACHES fairgoers something educational.
- 2 Use Non-Livestock form and write "Educational Poster" and title of poster.
- 3 ENTRY LIMIT: 3 posters per exhibitor (One poster per exhibit).
- 4 Size of poster: minimum of 2'x3' - 3'x4', maximum of 4'x6'.
- 5 Lettering shall be legible from 10 feet, and on one side only.
- 6 No display may be used for more than one year.
- 7 Poster must display the exhibit tag provided by the Fair in order to be judged.

### **CLASS:**

- 1 Ages 9-11
- 2 Ages 12-14
- 3 Ages 15 and over

## SECTION 249 | Miscellaneous Projects, Educational Posters Awards (Do Not Enter)

### **CLASS:**

- 1 **Best of Show Educational Posters** | \$25 & Rosette
- 2 **Best of Show School Individual Project** | \$25 & Rosette

## DEPARTMENT J23 & J27 | BEGINNING EXHIBITS

### ENTRY INFORMATION

DEADLINES	See Page 10 – ENTRY INFORMATION & IMPORTANT DATES
ENTRY LIMIT	None
ENTRY FEE	None

*Arrival/ Departure & Show Times: See Schedule on page 9.*

#### RULES:

- 1 Section 250 open to exhibitors 2 to 4 years of age as of January 1, 2025.
- 2 Section 251-252 must be 5 through 8 years of age as of January 1, 2025.
- 3 Please **note** that Delivery dates vary for each class below.

### DEPARTMENT – J23 SECTION 250 | Pre-School ages 2-4

#### CLASS:

- 1 Art or Crafts (please specify)

### DEPARTMENT – J27 SECTION 251 | Primary Members Ages 5-8

#### CLASS:

- 1 Foods, Baking, Canning, Confections, Cake Decorating
- 2 Vegetables, Potted Plants, Mini Gardens, Cut Flowers, and Arrangements

### DEPARTMENT – J23 SECTION 252 | Primary Members Ages 5-8

#### CLASS:

- 1 Sewing, Knitting, and other Needlework
- 2 Art, Photography, Crafts, and Hobbies
- 3 Any Other Item (please specify)

### DEPARTMENT J23 | BEGINNING TABLE SETTINGS – Primary Members

#### RULES:

- 1 Place setting **MUST** be set up by the exhibitor – **NO EXCEPTIONS.**
- 2 Place setting shall be set on table provided by fair. Setting cannot exceed 17 inches wide by 12 inches long.
- 3 Settings to be labeled with name, address and telephone number.
- 4 Place setting will be set for one.
- 5 No large centerpieces. Single stem bud vases allowed.
- 6 Each entry shall include a menu to be displayed on setting.
- 7 Care will be taken to ensure safety of all equipment and materials used, but Fair shall not be responsible for any loss.

### SECTION 253 | Place Settings Primary Members Ages 5-8

#### CLASS:

- 1 **Holiday:** Please specify (Christmas, 4<sup>th</sup> of July, Easter etc.)
- 2 **Special Occasion:** Please specify (Birthday, Wedding etc.)

## DEPARTMENT J23 | S.T.E.M. (Science, Technology, Engineering, and Math)

ENTRY INFORMATION	
DEADLINES	<i>See Page 10 – ENTRY INFORMATION &amp; IMPORTANT DATES</i>
ENTRY LIMIT	None
ENTRY FEE	None

*Arrival/ Departure & Show Times: See Schedule on page 9.*

**SECTION 254 | Physical Sciences** (Energy, Physics, Chemistry etc.)

**SECTION 255 | Life Sciences** (Natural Resources)

**SECTION 256 | Earth and Space Science** (Astronomy, Geology, Climatology etc.)

**SECTION 257 | Applications to Engineering and Technology** (Robotics, Rockets, Drones, Mapping, Lego (engineering), Electronics, Renewable Energy etc.)

**CLASS:**

- 1 Educational Poster, Summaries of work, Photo's (2x3)
- 2 K-12 Class Projects, After School Program,
- 3 Maker projects, Engineering and Tinkering Projects

**SECTION 258 | S.T.E.M. Awards** (Do Not Enter)

**CLASS:**

- 1 **Best of Show Physical Sciences** | \$25 & Rosette
- 2 **Best of Show Life Sciences** | \$25 & Rosette
- 3 **Best of Show Earth and Space Sciences** | \$25 & Rosette
- 4 **Best of Show Applications to Engineering & Technology Sciences** | \$25 & Rosette



## DEPARTMENT J23 | YOUTH SEWING

### ENTRY INFORMATION

DEADLINES	See Page 10 – ENTRY INFORMATION & IMPORTANT DATES
ENTRY LIMIT	None
ENTRY FEE	None

*Arrival/ Departure & Show Times: See Schedule on page 9.*

### SECTION 262 | Youth Sewing

#### CLASS:

- |  |  |
|--|--|
| <ol style="list-style-type: none"><li>1 Dress</li><li>2 Blouse/Shirt</li><li>3 Dolls and Toys</li><li>4 Jacket</li><li>5 Nightwear</li><li>6 Pants</li><li>7 Pillow/Pillow Case</li><li>8 Shorts/Skorts</li><li>9 Skirts</li></ol> | <ol style="list-style-type: none"><li>10 Tote Bag</li><li>11 Wool Garment</li><li>12 Coordinated Outfit- 2 pieces</li><li>13 Tied or sewn blanket</li><li>14 Any Apron</li><li>15 Any other sewing (please specify)</li><li>16 Thrift Flip (turn your thrift store finds into a new item) <b>NEW</b></li></ol> |
|--|--|

### SECTION 263 | Youth Sewing Awards (Do Not Enter)

#### CLASS:

- 1 Best of Show - Single Item, Junior Sewing | \$25 & Rosette
- 2 Best of Show Coordinated Outfit | \$25 & Rosette
- 3 Best of Show Wool Garment – 13 and Under | \$25 & Rosette
- 4 Best of Show Wool Garment – 14 & Over | \$25 & Rosette
- 5 Overall Winner Youth Sewing 13 and Under | \$50 & Rosette
- 6 Overall Winner Youth Sewing 14 & Over | \$50 & Rosette

## DEPARTMENT J23 | YOUTH QUILTS, NEEDLEWORK & FIBERWORK

### ENTRY INFORMATION

DEADLINES	<i>See Page 10</i> –ENTRY INFORMATION & IMPORTANT DATES
ENTRY LIMIT	None
ENTRY FEE	None

*Arrival/ Departure & Show Times: See Schedule on page 9.*

### SECTION 264 | Youth Quilts

**Note:** A minimum 3” wide sleeve must be attached to your quilt for hanging.

**CLASS:**

- |                             |                            |
|-----------------------------|----------------------------|
| 1 Single Item (pillow etc.) | 3 Quilt, Small (under 60”) |
| 2 Quilt, Large (60” & over) | 4 Quilt, Group             |

### SECTION 265 | Youth Embroidery

**CLASS:**

- |  |                                  |
|--|----------------------------------|
| 1 Cross Stitch                           | 5 Plastic Canvas                 |
| 2 Counted Cross Stitch                   | 6 Needlepoint                    |
| 3 Creative Stitchery, original design    | 7 Any Needlework made from a kit |
| 4 Creative Stitchery, pre stamped design | 8 Any Other Needlework           |
|  | 9 Machine Embroidery             |

### SECTION 266 | Youth Fiber Work

**RULES:**

- 1 Both finished article and handspun yarn must be entirely the work of the exhibitor.
- 2 Any fiber accepted.
- 3 Any entry received with signs of moths will immediately be released and returned to the exhibitor.

**CLASS:**

- |   |   |
|---|---|
| 1 Drop Spindle Yarn Skein (approx. 5 yards) | 3 Finished Product, knitted, crocheted, woven |
| 2 Wheel Yarn Skein (approx. 25 yards)       | 4 Felted Finished Product                     |

### SECTION 267 | Youth Knitting

**CLASS:**

- 1 Article of Clothing
- 2 Afghan/Blanket
- 3 Any Other (please specify)

### SECTION 268 | Youth Crocheting

**CLASS:**

- 1 Article of Clothing
- 2 Afghan/Blanket
- 3 Any Other (please specify)

**SECTION 269 | Youth Quilts, Needlework & Fiber Work Awards** (Do Not Enter)

**CLASS:**

- 1 **Best of Show Quilts** | \$25 & Rosette
- 2 **Best of Show Embroidery** | \$25 & Rosette
- 3 **Best of Show Fiber work** | \$25 & Rosette
- 4 **Best of Show Knitting** | \$25 & Rosette
- 5 **Best of Show Crocheting** | \$25 & Rosette
- 6 **Best of Show Machine Embroidery** | \$25 & Rosette

## DEPARTMENT J23 | YOUTH ARTS & CRAFTS

ENTRY INFORMATION	
DEADLINES	<i>See Page 10 – ENTRY INFORMATION &amp; IMPORTANT DATES</i>
ENTRY LIMIT	None
ENTRY FEE	None

*Arrival/ Departure & Show Times: See Schedule on page 9.*

### SECTION 270 | Youth Arts and Crafts

#### CLASS:

- |   |   |
|---|---|
| 1 Airplanes   | 12 Interlocking building toys (Lego's, Knex, etc.); (original design) |
| 2 Baskets   | 13 Leather Items (non-jewelry)  |
| 3 Beadwork  | 14 Magnets  |
| 4 Bird House  | 15 Rockets  |
| 5 Holiday Decorations   | 16 Textile/Fabric Painting (t/sweat, shirt, etc.)                     |
| 6 Clay, Plaster, Acrylics (any item)                                | 17 Wall Hangings  |
| 7 Collections   | 18 Window catchers  |
| 8 Candles   | 19 Other items (small); (under 24") specify                           |
| 9 Decorated Shoes   | 20 Other items (large); (over 24") specify                            |
| 10 Dough Art  |   |
| 11 Interlocking building toys (Lego's, knex, etc.); (made from kit) |   |

### SECTION 271 | Youth Ceramics and Hydrocal

#### CLASS:

- 1 Cup or Mug
- 2 Vases
- 3 Any other, please specify

### SECTION 273 | Youth Thrift Flip – upcycled items

#### CLASS:

- 1 Art Items
- 2 Totes
- 3 Any other (please specify)

### SECTION 275 | Youth Fine Arts

#### CLASS:

- 1 Oils & Acrylics
- 2 Pastels
- 3 Watercolors
- 4 Pen & Ink
- 5 Pencil
- 6 Charcoal

- 7 Sculpture
- 8 Any Other (please specify)

## SECTION 276 | Jewelry (any item)

### CLASS:

- 1 Beaded
- 2 Ceramic
- 3 Leather
- 4 Any Other

## SECTION 278 | Scrapbooks

### CLASS:

- 1 **Single Page** (please describe)
- 2 **Book** (min. 10 double-sided pages; max. 30 double sided; please describe)

## SECTION 279 | Apiary

### CLASS:

- 1 Extracted Honey (1½ lb. Jar-1 pint)
- 2 Display of Beeswax (unbleached – 1 to 10 lbs)
- 3 Comb Honey
- 4 Extracting Frame
- 5 Pollen (1/2 lb. jar approximately)

## SECTION 280 | I Found it on Pinterest

***Note:** Any non-perishable item inspired by Pinterest post. A printout of the original Pinterest post must be included with entry.*

### CLASS:

- 1 **Small** (under 12")
- 2 **Medium** (12"-18")
- 3 **Large** (Over 18")

## SECTION 281 | Uniquely Challenged or Gifted Arts & Craft items

### CLASS:

- 1 Arts & Crafts by the Educationally Challenged
- 2 Arts & Crafts by the Physically Challenged

## SECTION 282 | Jr. Arts & Crafts Awards (Do Not Enter)

### CLASS:

- 1 Best of Show Scrapbooks | \$25 & Rosette
- 2 Best of Show Fine Arts | \$25 & Rosette
- 3 Best of Show Arts & Crafts | \$25 & Rosette
- 4 Best of Show Holiday Crafts | \$25 & Rosette
- 5 Best of Show Ceramics and Hydrocal | \$25 & Rosette
- 6 Best of Thrift Flip | \$25 & Rosette
- 7 Best of Show Apiary | \$25 & Rosette
- 8 Best of Show Uniquely Challenged and Gifted Arts & Crafts | \$25 & Plaque
- 9 Best of Show Jewelry | \$25 & Rosette
- 10 Best of Show I Found It On Pinterest | \$25 & Rosette
- 11 Best of Show Collections | \$25 & Rosette

## DEPARTMENT J23 | YOUTH PHOTOGRAPHY

### ENTRY INFORMATION

DEADLINES	See Page 10 – ENTRY INFORMATION & IMPORTANT DATES
ENTRY LIMIT	None
ENTRY FEE	None

*Arrival/ Departure & Show Times: See Schedule on page 9.*

#### **RULES:**

- 1 Entries must be the work of the exhibitor with exception of processing, mounting, or framing.
- 2 Prints must be matted in black or mounted on black poster board. **No frames or glass.**
- 3 A label bearing the name and address of the exhibitor must be attached to the back of the mat/board.
- 4 Pictures must have been taken within 1 year of the opening date of the Fair. 5. Prints of any size, 5" x 7" (minimum) up to 16" x 20" (maximum) are eligible. Mounting size must not exceed 18" by 22".

### **SECTION 283 | Black & White Prints | 35 mm or Digital**

#### **CLASS:**

- 1 **Age Groups:** 9-11 year-olds
- 2 **Age Groups:** 12-14 year-olds
- 3 **Age Groups:** 15 years-old & up

### **SECTION 284 | Color Prints - 35 mm or Digital**

#### **CLASS:**

- 1 **Age Groups:** 9-11 year-olds
- 2 **Age Groups:** 12-14 year-olds
- 3 **Age Groups:** 15 years-old & up

### **SECTION 285 | Photo Sequence or Album - Framing Not Mandatory**

#### **CLASS:**

- 1 A black and white or color print sequence of 3 to 5 prints (any size up to 5"x7" maximum) of any subject. All prints in sequence to be mounted on one mounting board.
- 2 A story sequence of 5 to 10 black and white or color pictures on any subject. All prints in sequence to be mounted on the mounting board.
- 3 Photo Album containing at least 30 black and white or color prints taken by exhibitor and mounted in a regular photo album on pages not less than 8 ½ X 11.

### **SECTION 287 | Fair Theme**

#### **CLASS:**

- 1 Any photo relating to this year's Fair theme, please describe

## SECTION 288 | Junior Photography Awards (Do not Enter)

### CLASS:

- 1 Best of Show Youth Photography | \$25 & Plaque

## SECTION 290 | Manipulated Photos

### CLASS:

- 1 Mash-up: combine two or more things – people, animals, etc. –to create something unique.
- 2 Fantasy/sci-fi themed manipulation
- 3 Manipulated portrait
- 4 Any other manipulated image

## SECTION 291| Manipulated Photography Awards (Do not Enter)

### CLASS:

- 1 Best of Show Manipulated Photo | \$50 & Rosette

Need help with your entries?  
Not sure what class your item should go in?  
New to entering the fair and have a few questions?  
We are happy to help!  
707-283-3247  
Or  
Send an email to  
[EntryOffice@Sonoma-MarinFair.org](mailto:EntryOffice@Sonoma-MarinFair.org)



## DEPARTMENT J23 | YOUTH COMPUTER SCIENCE

### ENTRY INFORMATION

DEADLINES	See Page 10 – ENTRY INFORMATION & IMPORTANT DATES
ENTRY LIMIT	None
ENTRY FEE	None
NOTE	

*Arrival/ Departure & Show Times: See Schedule on page 9.*

### SECTION 293 | Computer Science

#### CLASS:

- 1 Using word processing and at least one other application (spreadsheet, paint or draw program, etc.) create an integrated document. Print-outs should be no larger than 8 1/2" x11".
- 2 Using a word processing program, create an 8 1/2"x11" poster. Use more than three different fonts in designing your poster. Do not include clip-art in the poster.
- 3 Create a picture (graphic) on the computer. Printouts should be no larger than 8 1/2" x11". Graphic should be completely original. Do not use clip-art or scanned art in your picture.
- 4 Create a poster on the computer using clip-art. Original artwork may be included. Print-outs should be no larger than 8 1/2"x11". Standard poster size.
- 5 Website Design (*see below for rules*)

#### RULES for Website Design

- 1 Entries must be prepared by the exhibitor.
- 2 Entry must include and 8 1/2"x11" framed picture/copy of the home page.
- 3 **All entries must include the website address on the entry form.**
- 4 All entries must have been made, collected, designed, or prepared within 1 year of opening date of the fair unless otherwise noted.

### SECTION 294 | Computer Science Awards (Do Not Enter)

#### CLASS:

- 1 **Best of Show** | \$25.00 & Rosette

## DEPARTMENT J23 | YOUTH TABLE SETTINGS

### ENTRY INFORMATION

<b>DEADLINES</b>	<i>See Page 10 –ENTRY INFORMATION &amp; IMPORTANT DATES</i>
<b>ENTRY LIMIT</b>	One entry per class
<b>ENTRY FEE</b>	None

*Arrival/ Departure & Show Times: See Schedule on page 9.*

#### **RULES:**

- 1 Table setting **MUST** be set up by the exhibitor – **NO EXCEPTIONS.**
- 2 Table setting shall be set on a standard card table (except for class 5 which will be a 30” round table, **provided by exhibitor**) or tray. **ALL** tables/trays provided by exhibitor. Tables/trays to be labeled with name, address & telephone number.
- 3 Table to be set for two (2) places. One exhibitor per table.
- 4 Table must be covered with appropriate tablecloth or covering, and must not touch the floor at any point.
- 5 The centerpiece may be made of fresh, dried or artificial materials (fresh or dried flowers, fruit, etc.) Proper flatware must be used.
- 6 Exhibitors may use any type of props (mannequins, etc.) to highlight their table settings.
- 7 Each entry shall include a menu list, to be displayed on table.
- 8 Care will be taken to ensure safety of all equipment and materials used, but the Fair shall not be responsible for any loss.

### SECTION 295 | Jr. Table Settings

#### CLASS:

- 1 **HOLIDAY:** Please specify (Christmas, Thanksgiving, 4th of July, etc.)
- 2 **SPECIAL OCCASION:** Please specify (Birthday, Wedding, Anniversary, etc.)
- 3 **WEEKEND LIVING:** Please specify (Barbecue, Sports, Picnic, etc.)
- 4 **DESIGNER TABLE:** 30” round table set for 2 (High Tea, Fondue Party, etc.)

### SECTION 296 | Jr. Table Setting Awards (Do Not Enter)

#### CLASS:

- 1 **Best of Show** | \$50 & Rosette

# DEPARTMENT J24 | YOUTH FLORICULTURE & FLORAL ARTS

## ENTRY INFORMATION

DEADLINES	See Page 10 –ENTRY INFORMATION & IMPORTANT DATES
ENTRY LIMIT	None
ENTRY FEE	None

*Arrival/ Departure & Show Times: See Schedule on page 9.*

### RULES:

- 1 Potted plants must be in suitable containers for display.
- 2 Exhibits must be correctly labeled.
- 3 Props (accessories) may be used in each class.
- 4 Real centerpieces may include fresh or dried flowers, fruits, vegetables, and/or other plant material.
- 5 Artificial centerpieces may be silk, tissue, plastic, etc., and may include some dried or treated natural material.

## SECTION 299 | Junior Floriculture and Floral Arts

### CLASS:

- |   |   |
|---|---|
| <ol style="list-style-type: none"> <li>1 Potted Plants</li> <li>2 Mini Gardens (Under 8" in diameter)</li> <li>3 Mini Gardens (Over 8" in diameter)</li> <li>4 Terrariums</li> <li>5 Fresh Floral Arrangements</li> </ol> | <ol style="list-style-type: none"> <li>6 Silk, Dried, or Artificial Arrangement</li> <li>7 Real Holiday Centerpiece</li> <li>8 Real Centerpiece (Any other theme)</li> <li>9 Artificial Holiday Centerpiece</li> <li>10 Artificial Centerpiece (Any other theme)</li> </ol> |
|---|---|

## SECTION 300 | Junior Floriculture and Floral Arts Awards (Do Not Enter)

### CLASS:

- 1 Best of Show Floriculture | \$25.00 & Rosette

Need help with your entries?  
 Not sure what class your item should go in?  
 New to entering the fair and have a few questions?  
 We are happy to help!  
 707-283-3247  
 Or  
 Send an email to  
[EntryOffice@Sonom-MarinFair.org](mailto:EntryOffice@Sonom-MarinFair.org)

## DEPARTMENT J26 | YOUTH VEGETABLES, HERBS

### ENTRY INFORMATION

DEADLINES	See Page 10 –ENTRY INFORMATION & IMPORTANT DATES
ENTRY LIMIT	None
ENTRY FEE	None

*Arrival/ Departure & Show Times: See Schedule on page 9.*

#### RULES:

- 1 Each exhibit must be listed separately on entry form by species and variety.
- 2 The type of vegetable desired for exhibit will be uniform commercial grade rather than overgrown. Monstrosities will not be considered for cash awards.
- 3 A bunch should weigh between 1/2 to 1 1/2 pounds.
- 4 Exhibitor must provide prop to keep decorated potato upright for duration of fair.

### SECTION 302 | Vegetables & Herbs

*Note: Quantities listed*

#### CLASS:

- 1 Fruit & Pod Vegetables (4) Beans, Eggplant, Tomatoes, Peppers, etc.
- 2 Leafy & Stem Vegetables (1) Cabbage, Lettuce, Leafy vegetable, Corn (2 ears) etc.
- 3 Root, Bulb & Tuber Vegetables (4) Onions, Garlic, Potatoes, Radishes, Carrots, etc.
- 4 Vine Crop Vegetables (4) Cucumbers, Squash, Zucchini, etc.
- 5 Vine Crop Melons (2)
- 6 Potted Vegetables (1)
- 7 Herbs - Potted, fresh cut in pint jars with water, **OR** Dried (1oz. in a sealed plastic bag).

### SECTION 305 | Jr. Vegetables, Herbs Awards (Do Not Enter)

*Note: Sweepstakes will be calculated as follows: 1st place - 5 points; 2nd place - 3 points; 3rd place - 1 point (see state rule IV-7).*

#### CLASS:

- 1 Best of Show Vegetables and Herbs | \$25 & Rosette

## DEPARTMENT J27 | YOUTH FOODS

### ENTRY INFORMATION

<b>DEADLINES</b>	<i>See Page 10 – ENTRY INFORMATION &amp; IMPORTANT DATES</i>
<b>ENTRY LIMIT</b>	None
<b>ENTRY FEE</b>	None

*Arrival/ Departure & Show Times: See Schedule on page 9.*

**QUANTITIES:**

- Muffins, biscuits, rolls, cookies: 1/2 dozen, Cakes, Pies: 1/4 plus 1 piece, Bread: 1/4 loaf, plus 1 slice

### SECTION 306 | Junior Baking and Confections

*Note: \*\* Please specify item entered*

**CLASS:**

- |   |  |
|---|--|
| <ul style="list-style-type: none"> <li>1 Brownies</li> <li>2 Fruit Bars</li> <li>3 Any Other Bar Cookie**</li> <li>4 Chocolate Chip Cookies</li> <li>5 Oatmeal Cookies</li> <li>6 Peanut Butter Cookies</li> <li>7 Snickerdoodles</li> <li>8 Any Other Drop Cookie**</li> <li>9 Rolled and Cut Cookies</li> <li>10 Molded and Pressed Cookies</li> <li>11 Biscuits</li> <li>12 Bread</li> <li>13 Muffins</li> </ul> | <ul style="list-style-type: none"> <li>14 Rolls</li> <li>15 Any Other Bread, Roll, Etc**</li> <li>16 Coffee Cake</li> <li>17 Layered Cakes</li> <li>18 Cakes (Non-Layered)</li> <li>19 Cupcakes (Six)</li> <li>20 One Crust Pie</li> <li>21 Two Crust Pie</li> <li>22 Any Other Pie or Pastry**</li> <li>23 Chocolate Fudge</li> <li>24 Any Other Fudge**</li> <li>25 Popcorn Balls</li> <li>26 Any Other Candy**</li> </ul> |
|---|--|

### SECTION 307 | Jr. Baking & Confections Awards (Do Not Enter)

**CLASS:**

- 1 Best of Show Baking & Confections | \$25 & Plaque
- 2 Best of Show Chocolate Chip Cookies | Award

## DEPARTMENT J27 | JUNIOR DECORATED FOODS

### ENTRY INFORMATION

DEADLINES	<i>See Page 10 –ENTRY INFORMATION &amp; IMPORTANT DATES</i>
ENTRY LIMIT	None
ENTRY FEE	None

*Arrival/ Departure & Show Times: See Schedule on page 9.*

### SECTION 309 | Junior Decorated Foods

#### CLASS:

- 1 Any Decorated Real Cake
- 2 Any Decorated Artificial Dummy Cake - A mix of Styrofoam or cardboard may be used, provided the shape is one, which could be reasonably achieved through baking.
- 3 Decorated Cupcakes (six)
- 4 Any other decorated item (sugar mold, cake pops, gingerbread house, etc.)

### SECTION 310 | Junior Decorated Foods Awards (Do Not Enter)

#### CLASS:

- 1 **Best of Show Real Decorated Cake** | \$25 & Rosette
- 2 **Best of Show Artificial Dummy Cake** | \$25 & Rosette
- 3 **Best of Show Any Other Decorated Item** | \$25 & Rosette

## MAKE IT WITH DAIRY

Sponsored by North Bay Dairy Women

#### RULES:

- 1 "MAKE IT WITH Dairy" must be printed on entry form.
- 2 Each entry must be made by one individual.
- 3 May use any recipe that includes at least three dairy products.
- 4 Quantities: ½ Dozen
- 5 **RECIPE MUST ACCOMPANY ENTRY.**

### AMERICAN SYSTEM OF JUDGING – CASH AWARDS OFFERED PER CLASS

1 <sup>st</sup>	2 <sup>nd</sup>	3 <sup>rd</sup>
\$15.00	\$10.00	\$5.00

### SECTION 312 | Make It with Dairy

#### CLASS:

- 1 Any dessert, please describe (i.e., cheesecake, etc.)

## MAKE IT WITH BUTTER

Sponsored by North Bay Dairy Women

The recipe for the cookies must accompany each entry, to be printed on a regular card approximately 3" X 5" ATTACHED TO ENTRY.

- 1 "MADE WITH BUTTER" Must be printed on entry form.
- 2 Butter must be one of the principal ingredients of the recipe.
- 3 The recipe must contain at least one other dairy product (milk, cream, etc.)
- 4 The recipe and the right to publish it with the name of the contestant becomes the property of the Sonoma-Marin Fair.
- 5 Entries will be judged on a) originality, b) practicality, c) economy, d) neatness, and the scorecard for cookies.
- 6 Each entry must be made by one individual only.

### AMERICAN SYSTEM OF JUDGING – CASH AWARDS OFFERED PER CLASS

1 <sup>st</sup>	2 <sup>nd</sup>	3 <sup>rd</sup>
\$15.00	\$10.00	\$5.00

## SECTION 313 | Make it With Butter

### CLASS:

- 1 Make it with Butter – Any Cookies

## MAKE IT WITH EGGS

### RULES:

- 1 "MAKE IT WITH EGGS" must be printed on entry forms.
- 2 Entry must be made by one individual.
- 3 Entry must be made from recipes using 3 or more eggs.
- 4 Recipe must accompany each entry.

### AMERICAN SYSTEM OF JUDGING – CASH AWARDS OFFERED PER CLASS

1 <sup>st</sup>	2 <sup>nd</sup>	3 <sup>rd</sup>
\$15.00	\$10.00	\$5.00

## SECTION 314 | Make It with Eggs

### CLASS:

- 1 Any item, please describe.

## MAKE IT WITH CHEESE

**RULES:**

- 1 "MAKE IT WITH CHEESE" must be printed on entry forms.
- 2 Entry must be made by one individual.
- 3 Recipe must accompany each entry.

### AMERICAN SYSTEM OF JUDGING – CASH AWARDS OFFERED PER CLASS

1 <sup>st</sup>	2 <sup>nd</sup>	3 <sup>rd</sup>
\$15.00	\$10.00	\$5.00

### SECTION 315 | Make It with Cheese

**CLASS:**

- 1 Any item, please describe

### SECTION 316 | Awards (Do not enter)

**CLASS:**

- 1 Best of Show Make It with Dairy | \$25 & Rosette
- 2 Best of Show Make It with Eggs | \$25 & Rosette
- 3 Best of Show Make with Cheese | \$25 & Rosette
- 4 Best of Show Make It with Butter | \$50 & Rosette

## DEPARTMENT J27 | YOUTH PRESERVED FOODS

ENTRY INFORMATION	
DEADLINES	<i>See Page 10 – ENTRY INFORMATION &amp; IMPORTANT DATES</i>
ENTRY LIMIT	None
ENTRY FEE	None
NOTE	<i>STANDARD JAR: A container specifically designed for canning purposes.</i>

**Arrival/ Departure & Show Times: See Schedule on page 9.**

**RULES:**

- 1 **No** paraffin seals. All canning exhibits must be in sealed standard jars.
- 2 All entries must be prepared and canned or packaged by exhibitors within one (1) year of opening date of the Fair – June 19th 2025.
- 3 Submit two jars of each product entered -one to be opened for judging, the other jar for display.
- 4 Entry form must list the type of product (fruit, vegetable, preserves, etc.)
- 5 All entries shall comply to the USDA Guidebook Complete Guide to Home Canning.
- 6 Jar labels should list Exhibitor name, type of product and process (apricot jam, pectin method; apricot halves, water bath processed) **Label must be on bottom of jar.**
- 7 Dried products should be in plastic bags, wrapped in clear plastic or in jars with lids.
- 8 Each entry must be a different product, or the same product preserved by a different method.
- 9 **ALL** Open jars must be removed immediately after judging. Any unclaimed jars will be discarded.
- 10 **QUANTITIES:** Minimum ½ pint for Sections 318-323 and minimum 2 ounces for Section 324.



## SECTION 318 | Fruits / Vegetables (please specify type in each class)

### CLASS:

- 1 Stone Fruit (i.e. apricot, peach, nectarine, please specify)
- 2 Vegetable, please specify
- 3 Any other Fruit/Vegetables, please specify

## SECTION 319 | Pickles, Relishes and Vinegar

### CLASS:

- |                          |                                   |
|--------------------------|-----------------------------------|
| 1 Dill Pickles           | 5 Vinegar balsamic                |
| 2 Bread & Butter Pickles | 6 Vinegar flavored                |
| 3 Beets, pickled         | 7 Any other vinegar, specify      |
| 4 Beans, pickled         | 8 Any other pickled food, specify |
|                          | 9 Any relish, specify             |

## SECTION 320 | Jams

### CLASS:

- |               |                             |
|---------------|-----------------------------|
| 1 Apricot     | 4 Raspberry                 |
| 2 Blackberry  | 5 Strawberry                |
| 3 Boysenberry | 6 Any other, please specify |

## SECTION 321 | Jellies

### CLASS:

- |                 |                             |
|-----------------|-----------------------------|
| 1 Apple         | 4 Raspberry                 |
| 2 Berry         | 5 Strawberry                |
| 3 Grape or Wine | 6 Any other, please specify |

## SECTION 322 | Butters, Marmalades, Preserves, Olive Oils

### CLASS:

- |  |                                       |
|--|---------------------------------------|
| 1 Butters, any kind, please specify    | 3 Preserves, any kind, please specify |
| 2 Marmalades, any kind, please specify | 4 Olive Oil, any kind, please specify |

## SECTION 323 | Sauces, Condiments, & Salsa

### CLASS:

- |                   |                                    |
|-------------------|------------------------------------|
| 1 BBQ Sauce       | 6 Salsa, Hot                       |
| 2 Spaghetti Sauce | 7 Salsa, Mild                      |
| 3 Pesto Sauce     | 8 Salsa, Any Other, please specify |
| 4 Mustard, Hot    | 9 Other Sweet Sauce, specify       |
| 5 Mustard, Mild   | 10 Other Savory Sauce, specify     |

## SECTION 324 | Dried Foods & Meats

### CLASS:

- |                                    |  |
|------------------------------------|--|
| 1 Dried Fruit, please specify      | 3 Dried Meats, please specify          |
| 2 Dried Vegetables, please specify | 4 Any Other dried food, please specify |

## SECTION 325 | Junior Preserved Foods Awards (Do Not Enter)

### CLASS:

- 1 Best of Show Preserved Foods | \$25 & Plaque